

Маркетинговое агентство

**S D A**

**Отчет по результатам исследования**

**Аналитический обзор морских портов  
Дальневосточного бассейна  
(демонстрационная версия)**

**Период исследования: январь 2018-сентябрь 2020**

—

*Ноябрь 2020*



# Содержание

Описание проекта

Грузооборот морских портов РФ и портов Дальневосточного бассейна

Доли грузооборота портов Дальневосточного бассейна

Структура грузооборота портов Дальневосточного бассейна по номенклатурным группам

Детализированная структура грузооборота портов Дальневосточного бассейна

ТОП-10 стивидоров Дальневосточного бассейна по объему грузооборота

Характеристики порта Восточный

Грузооборот стивидоров порта Восточный

Динамика грузооборота стивидоров порта Восточный по месяцам

Детализированная структура грузооборота порта Восточный

Динамика грузооборота порта Восточный по типам грузов по месяцам

Характеристики порта Ванино

Грузооборот стивидоров порта Ванино

Динамика грузооборота стивидоров порта Ванино по месяцам

Детализированная структура грузооборота порта Ванино

Динамика грузооборота порта Ванино по типам грузов по месяцам

Характеристики порта Находка

Грузооборот стивидоров порта Находка

Динамика грузооборота стивидоров порта Находка по месяцам

Детализированная структура грузооборота порта Находка

Динамика грузооборота порта Находка по типам грузов по месяцам

Характеристики порта Владивосток

Грузооборот стивидоров порта Владивосток

Динамика грузооборота стивидоров порта Владивосток по месяцам

Детализированная структура грузооборота порта Владивосток

Динамика грузооборота порта Владивосток по типам грузов по месяцам

# Содержание

Характеристики порта Де-Кастри

Грузооборот стивидоров порта Де-Кастри

Динамика грузооборота стивидоров порта Де-Кастри по месяцам

Детализированная структура грузооборота порта Де-Кастри

Динамика грузооборота порта Де-Кастри по типам грузов по месяцам

Характеристики порта Шахтерск

Грузооборот стивидоров порта Шахтерск

Динамика грузооборота стивидоров порта Шахтерск по месяцам

Детализированная структура грузооборота порта Шахтерск

Динамика грузооборота порта Шахтерск по типам грузов по месяцам

Характеристики порта Посьет

Грузооборот стивидоров порта Посьет

Динамика грузооборота стивидоров порта Посьет по месяцам

Детализированная структура грузооборота порта Посьет

Динамика грузооборота порта Посьет по типам грузов по месяцам

Характеристики порта Корсаков

Грузооборот стивидоров порта Корсаков

Динамика грузооборота стивидоров порта Корсаков по месяцам

Детализированная структура грузооборота порта Корсаков

Динамика грузооборота порта Корсаков по типам грузов по месяцам

Характеристики порта Петропавловск-Камчатский

Грузооборот стивидоров порта Петропавловск-Камчатский

Динамика грузооборота стивидоров порта Петропавловск-Камчатский по месяцам

Детализированная структура грузооборота порта Петропавловск-Камчатский

Динамика грузооборота порта Петропавловск-Камчатский по типам грузов по месяцам

# Содержание

Характеристики порта Советская Гавань

Грузооборот стивидоров порта Советская Гавань

Динамика грузооборота стивидоров порта Советская Гавань по месяцам

Детализированная структура грузооборота порта Советская Гавань

Динамика грузооборота порта Советская Гавань по типам грузов по месяцам

Характеристики порта Магадан

Грузооборот стивидоров порта Магадан

Динамика грузооборота стивидоров порта Магадан по месяцам

Детализированная структура грузооборота порта Магадан

Динамика грузооборота порта Магадан по типам грузов по месяцам

Характеристики порта Холмс

Грузооборот стивидоров порта Холмс

Динамика грузооборота стивидоров порта Холмс по месяцам

Детализированная структура грузооборота порта Холмс

Динамика грузооборота порта Холмс по типам грузов по месяцам

Характеристики порта Пригородное

Грузооборот стивидоров порта Пригородное

Динамика грузооборота порта Пригородное по типам грузов по месяцам

Характеристики порта Зарубино

Грузооборот стивидоров порта Зарубино

Динамика грузооборота порта Зарубино по типам грузов по месяцам

Характеристики порта Москальво

Грузооборот стивидоров порта Москальво

Динамика грузооборота порта Москальво по типам грузов по месяцам

Характеристики порта Охотск

Грузооборот стивидоров порта Охотск

Динамика грузооборота порта Охотск по типам грузов по месяцам

# Описание проекта

**Цель:** анализ грузооборота портов и стивидоров, входящих в состав портов Дальневосточного бассейна

**Период исследования:** январь 2018 - сентябрь 2020

**География:** Дальневосточный Бассейн РФ

**Предмет исследования:**

- Порт Ванино;
- Порт Владивосток;
- Порт Восточный;
- Порт Де-Кастри;
- Порт Зарубино;
- Порт Корсаков;
- Порт Магадан;
- Порт Находка;
- Порт Невельск;
- Порт Николаевск-на-Амуре;
- Порт Ольга;
- Порт Охотск;
- Порт Петропавловск-Камчатский;
- Порт Посьет;
- Порт Пригородное;
- Порт Советская Гавань;
- Порт Холмск Порт Шахтерск.

**Источники информации:**

- Годовые отчеты стивидоров и раскрытие информации;
- Открытая информация на сайтах компаний;
- Статистическая данные: Росморпорт, Росстат, Морцентр ТЭК, РЖД.

Маркетинговое агентство

**S D A**

# Порты **Дальневосточного бассейна** в структуре грузооборота морских портов **России**

—

# Comparing average wages for men & women in manufacturing services

Figure 1 shows the average wages for men and women in manufacturing services in 2000, 2005, and 2010. The y-axis represents the average wage in dollars, and the x-axis represents the year. The legend indicates that blue bars represent men and red bars represent women.

Figure 1: Comparing average wages for men & women in manufacturing services, 2000-2010



## How opportunities impact us

Opportunities impact us in many ways, and we can use these insights to help us better understand the world around us. The following table shows the ways in which opportunities impact us, and the ways in which we can use these insights to help us better understand the world around us.

How opportunities impact us



Opportunities impact us in many ways, and we can use these insights to help us better understand the world around us. The following table shows the ways in which opportunities impact us, and the ways in which we can use these insights to help us better understand the world around us.

Category	Percentage
Red	35%
Blue	25%
Orange	15%
Teal	10%
Purple	8%
Green	7%
Light Blue	6%
Dark Blue	3%
Dark Red	2%

Opportunities impact us in many ways, and we can use these insights to help us better understand the world around us. The following table shows the ways in which opportunities impact us, and the ways in which we can use these insights to help us better understand the world around us.



## Средства индивидуальной защиты (СИЗ) по профессиональным группам

Средства индивидуальной защиты (СИЗ) – это средства, которые используются для защиты человека от вредных факторов окружающей среды, таких как пыль, газы, пары, шум, вибрация, радиация, электричество, механические повреждения и т.д.

Средства индивидуальной защиты (СИЗ) по профессиональным группам



45%

25%

15%

10%

5%

## Environmental impact of different transport modes

Environmental impact is measured in terms of CO<sub>2</sub> emissions per passenger-kilometer (CO<sub>2</sub>-emissions per passenger-km). The chart shows the CO<sub>2</sub> emissions for different transport modes across various distances.

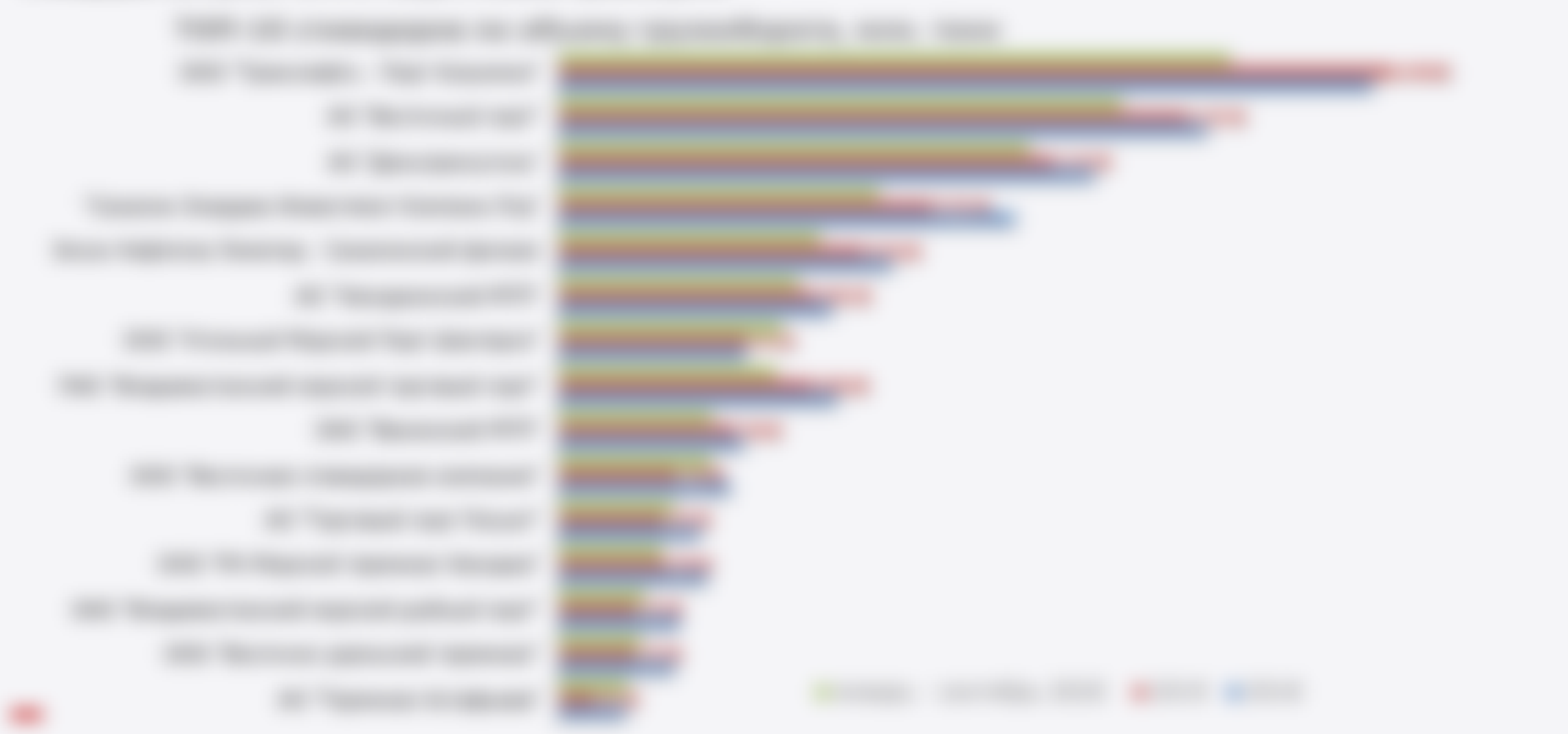


Distance (km)	Air (CO <sub>2</sub> -emissions per passenger-km)	Rail (CO <sub>2</sub> -emissions per passenger-km)	Road (CO <sub>2</sub> -emissions per passenger-km)	Water (CO <sub>2</sub> -emissions per passenger-km)
100	0.15	0.08	0.05	0.02
200	0.08	0.04	0.03	0.01
300	0.05	0.03	0.02	0.01
400	0.04	0.02	0.02	0.01
500	0.03	0.02	0.02	0.01
600	0.02	0.02	0.02	0.01
700	0.02	0.02	0.02	0.01
800	0.02	0.02	0.02	0.01
900	0.02	0.02	0.02	0.01
1000	0.02	0.02	0.02	0.01

Legend: Air (green), Rail (red), Road (blue), Water (yellow)

# 1995-1996 Comparison of the 1995 and 1996 Survey Results

The following table compares the 1995 and 1996 survey results for the 1995 and 1996 survey years. The table shows the percentage of respondents who answered "Yes" and "No" to each question. The 1995 survey results are shown in the left column and the 1996 survey results are shown in the right column.



# SDA

Step **Success**

—



### Supercomputer usage increased

Supercomputer usage increased by 10% in 2012, with a total of 1.2 million hours of usage.

Usage of supercomputers in 2012 was 1.2 million hours, up from 1.1 million hours in 2011. This represents a 10% increase in usage over the year.

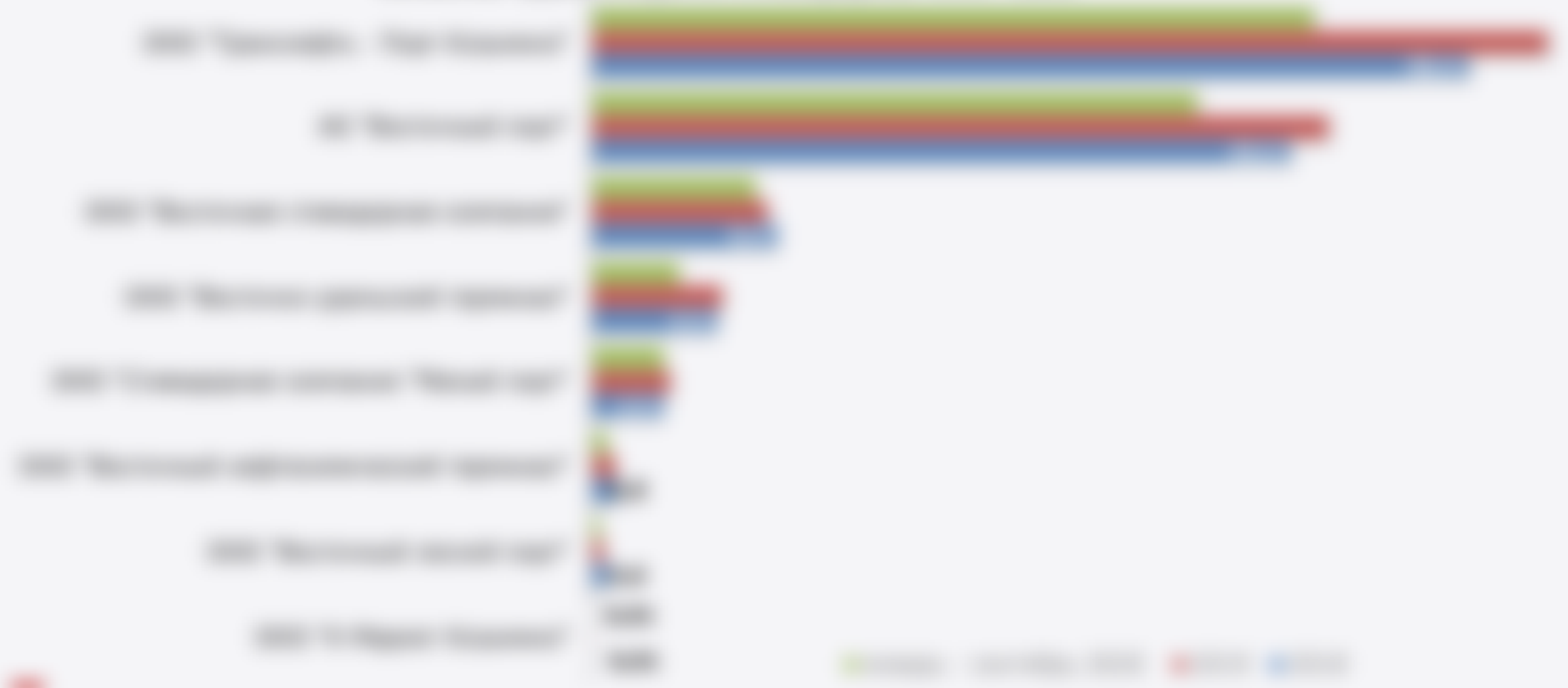


Source: National Science Foundation, Supercomputing Resource Survey, 2012. Usage is measured in hours of execution.

# Expanding coverage into Europe

From 2010 to 2012, the number of new policies issued in Europe increased by 15%.

Number of new policies issued in Europe, 2010-2012



**Средние показатели потребления энергии на единицу**



# Environmental Impact Assessment Report

Project Name: [Project Name]

Table 1: Environmental Impact Assessment Results



Table 2: Environmental Impact Assessment Results (Continued)

Category	Baseline (Green)	Proposed (Red)	Mitigated (Blue)
Water Quality	85	95	90
Air Quality	75	85	80
Soil Quality	65	75	70
Biological Resources	55	65	60
Cultural Resources	45	55	50
Visual Resources	35	45	40
Historic Resources	25	35	30
Archaeological Resources	15	25	20
Seismicity	10	15	12
Other Resources	5	10	8

Legend: Baseline (Green), Proposed (Red), Mitigated (Blue)



## Business expenditures were increased as sales were on average



# SDA

Step **Business**

=



### Supercomputer usage trends

These charts show the number of supercomputers in use in the United States from 2000 to 2010. The number of supercomputers has increased significantly over this period, with a sharp rise starting around 2005.

The following table shows the number of supercomputers in use in the United States from 2000 to 2010. The number of supercomputers has increased significantly over this period, with a sharp rise starting around 2005.



# Expenditure on transport in 2000

(in million)



**Diagrama organizacional da empresa após fusão de empresas**



# Environmental Impact Assessment Report

Project Name: [Project Name]

Figure 1: Environmental Impact Assessment Results



Figure 2: Environmental Impact Assessment Results (Detailed)

Category	Air Quality (Green)	Water Quality (Red)	Noise Levels (Blue)	Soil Contamination (Orange)
Air Quality	High	High	High	High
Water Quality	Medium-High	Medium-High	Medium-High	Medium-High
Noise Levels	Medium	Medium	Medium	Medium
Soil Contamination	Low	Low	Low	Low

Legend: Air Quality (Green), Water Quality (Red), Noise Levels (Blue), Soil Contamination (Orange)



**SDA**

**Step 1: Review**

**1**



### Supercomputer Usage Summary

This chart displays the usage of supercomputers across three categories: **Category A**, **Category B**, and **Category C**. The data is presented in a table format below.

Category	Usage Type	Usage Count
Category A	Usage Type 1	100
	Usage Type 2	100
	Usage Type 3	100
	Usage Type 4	100
Category B	Usage Type 1	100
	Usage Type 2	100
	Usage Type 3	100
	Usage Type 4	100
Category C	Usage Type 1	100
	Usage Type 2	100
	Usage Type 3	100
	Usage Type 4	100



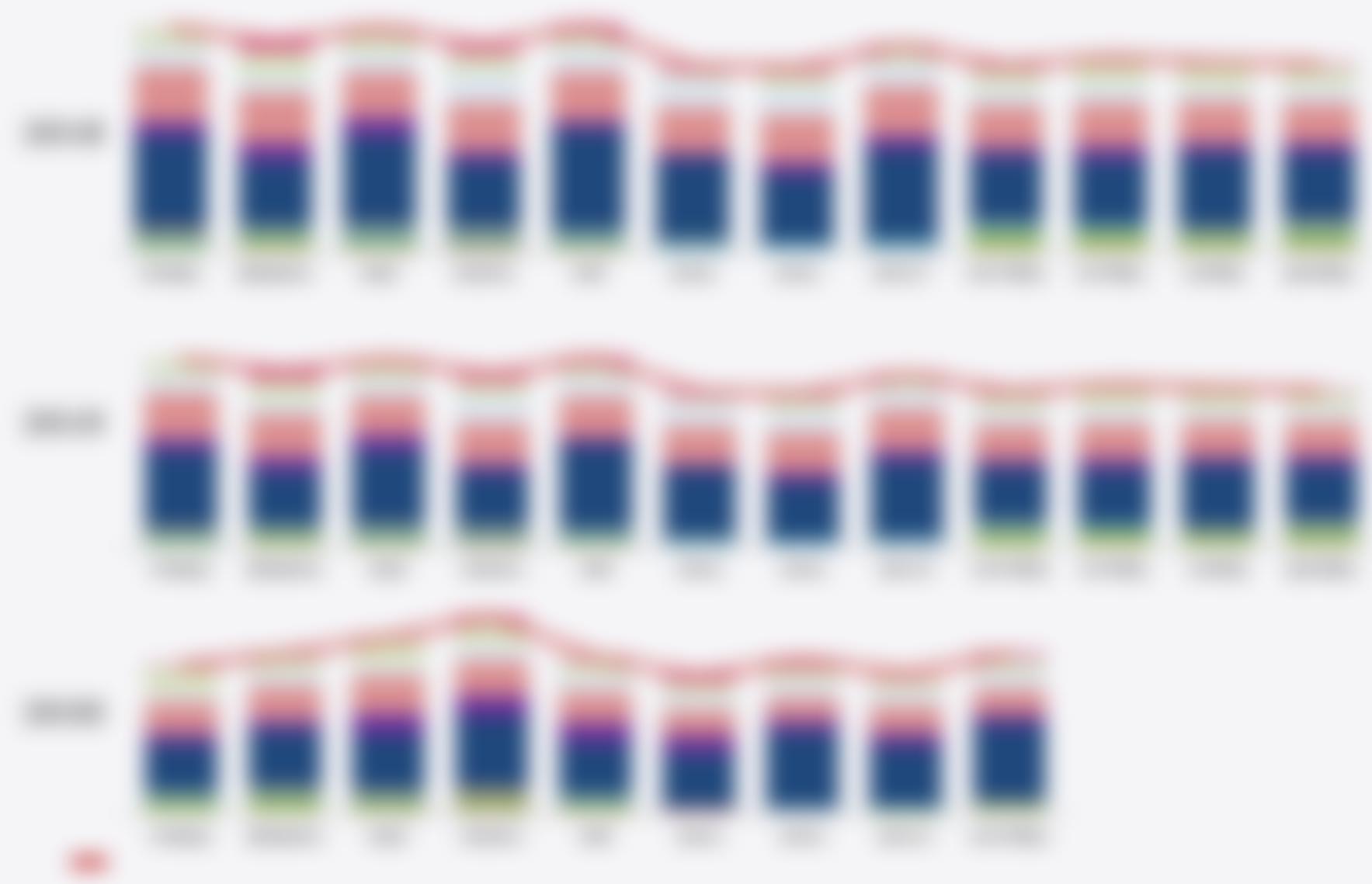
# Country Comparison: Average Income

Bar chart comparing average income across various countries. The Y-axis lists countries, and the X-axis represents average income in USD. The chart uses four colors: green, red, blue, and yellow.

Average Income by Country (USD)



### Business opportunities managers might consider in Mexico



# Investment opportunities in the market

Investment opportunities in the market



Business operations report: Revenue by region, quarter, and product



**SDA**

**Step 2: Run**

**1**

# Supernovae rates in Europe

Supernovae rates in Europe



# European countries with the highest

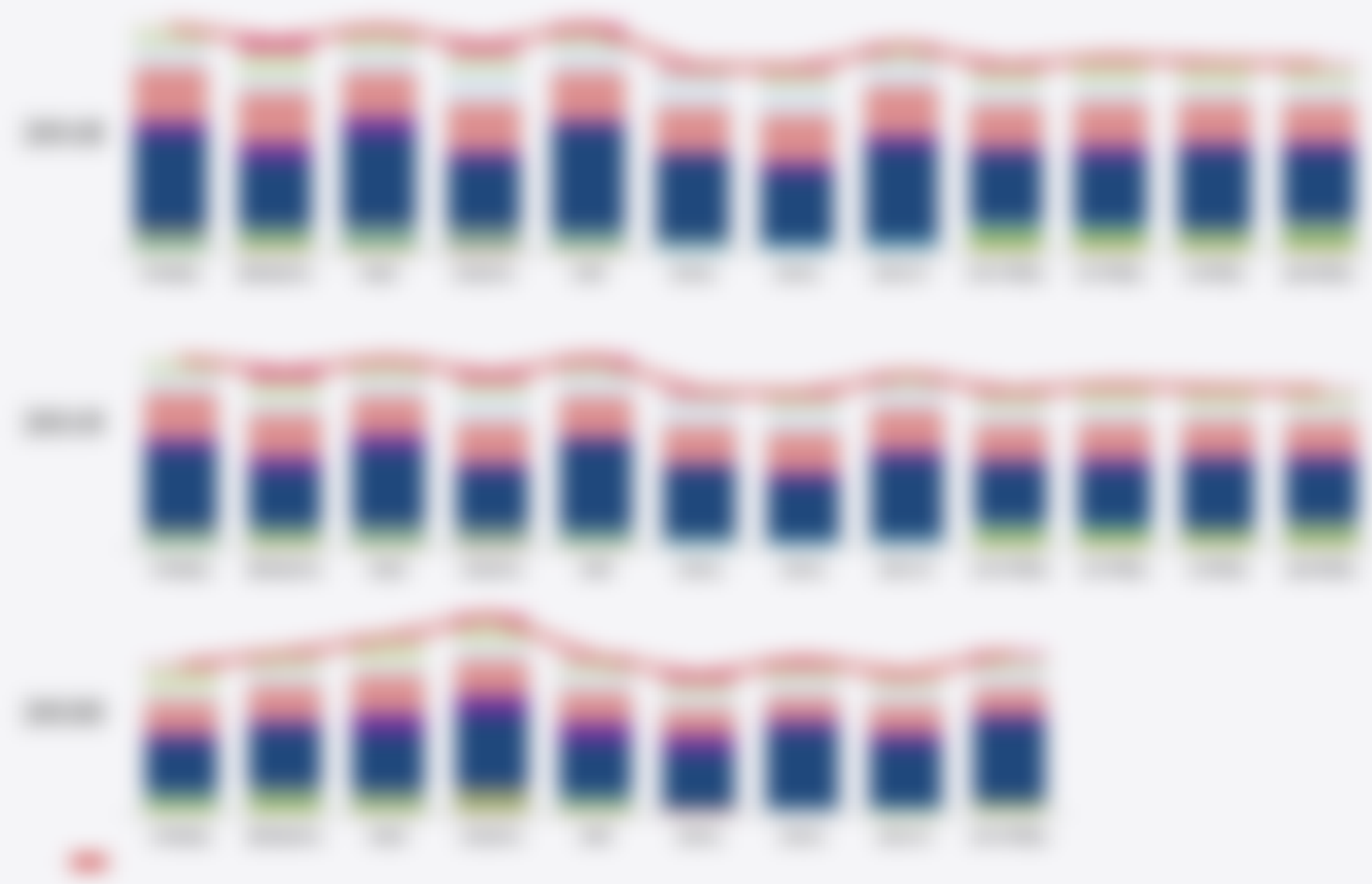
Share of population aged 65+ in 2020

Share of population aged 65+ in 2020



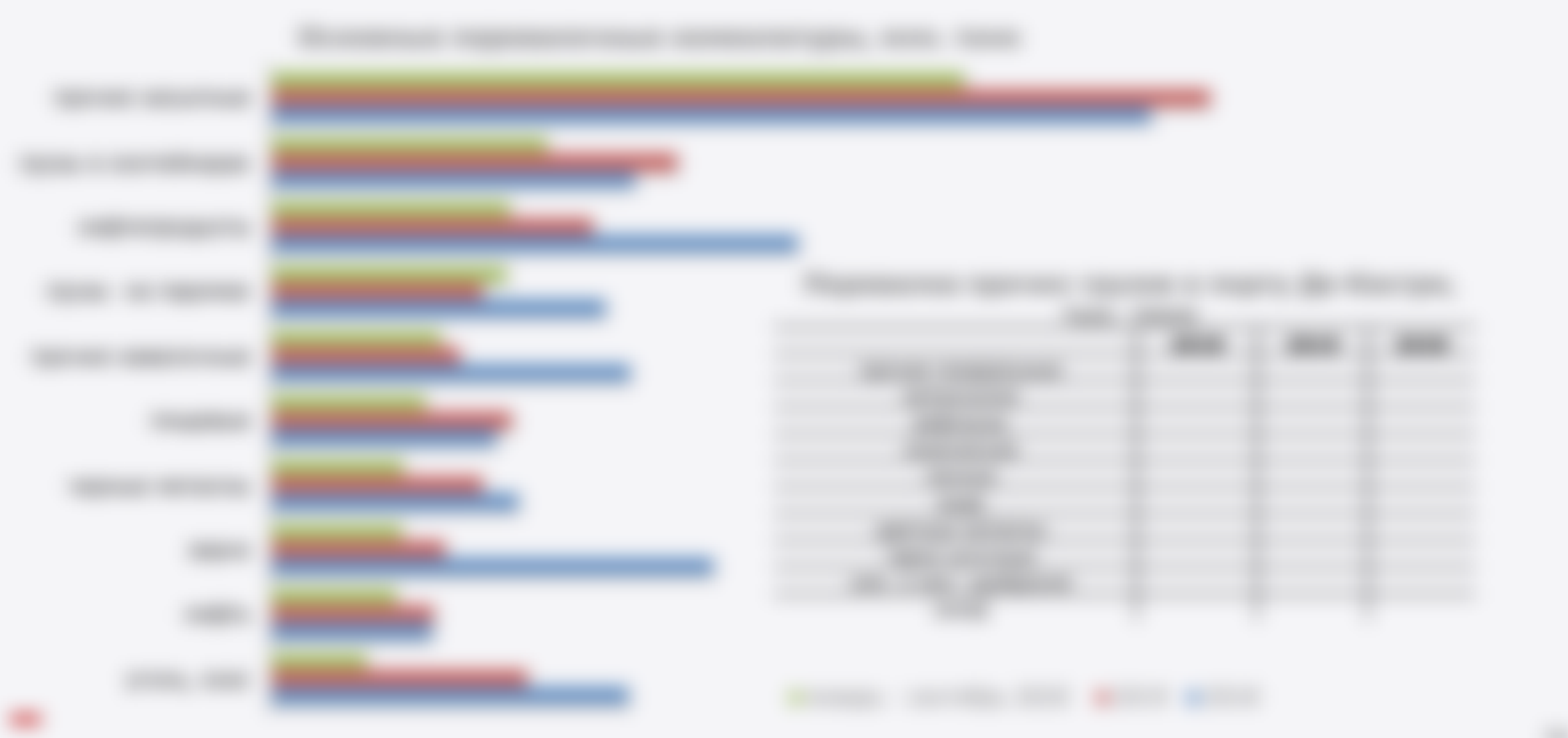


## Business expenditure on advertising in Europe in 2014



# Investment in research and development in Europe

Source: Eurostat (2018)



## Business expenditure maps for Europe in 2008 (total expenditure in million)



**SDA**

**Step Response**

**1**

### Supercomputer usage by region

Bar chart showing Supercomputer usage by region (North America, Europe, Asia) from 2010 to 2014. The chart shows a general upward trend in usage across all regions, with North America leading significantly.



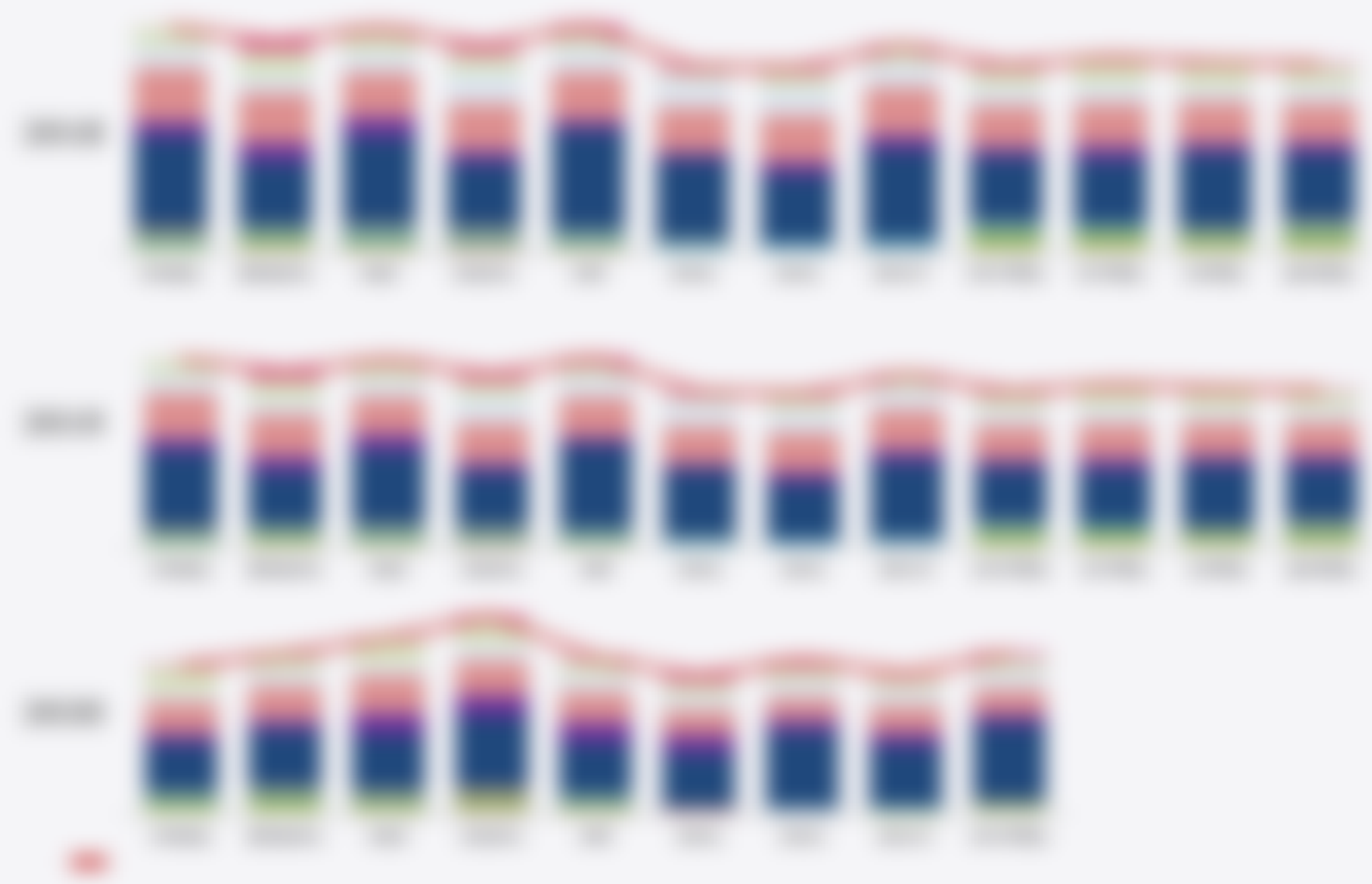
# Country-wise consumption of sugar

Bar chart showing the consumption of sugar in million metric tons (MT) for various countries from 2010 to 2015.

Country-wise consumption of sugar (in million metric tons)



### Business cycle indicators: composite index: European vs. average



# Investment opportunities in the market

Investment opportunities in the market





## Business expenditures by region: Expenditure in current prices in million



**SDA**

**Step 1: Measure**

**1**

# Supercomputer usage forecast

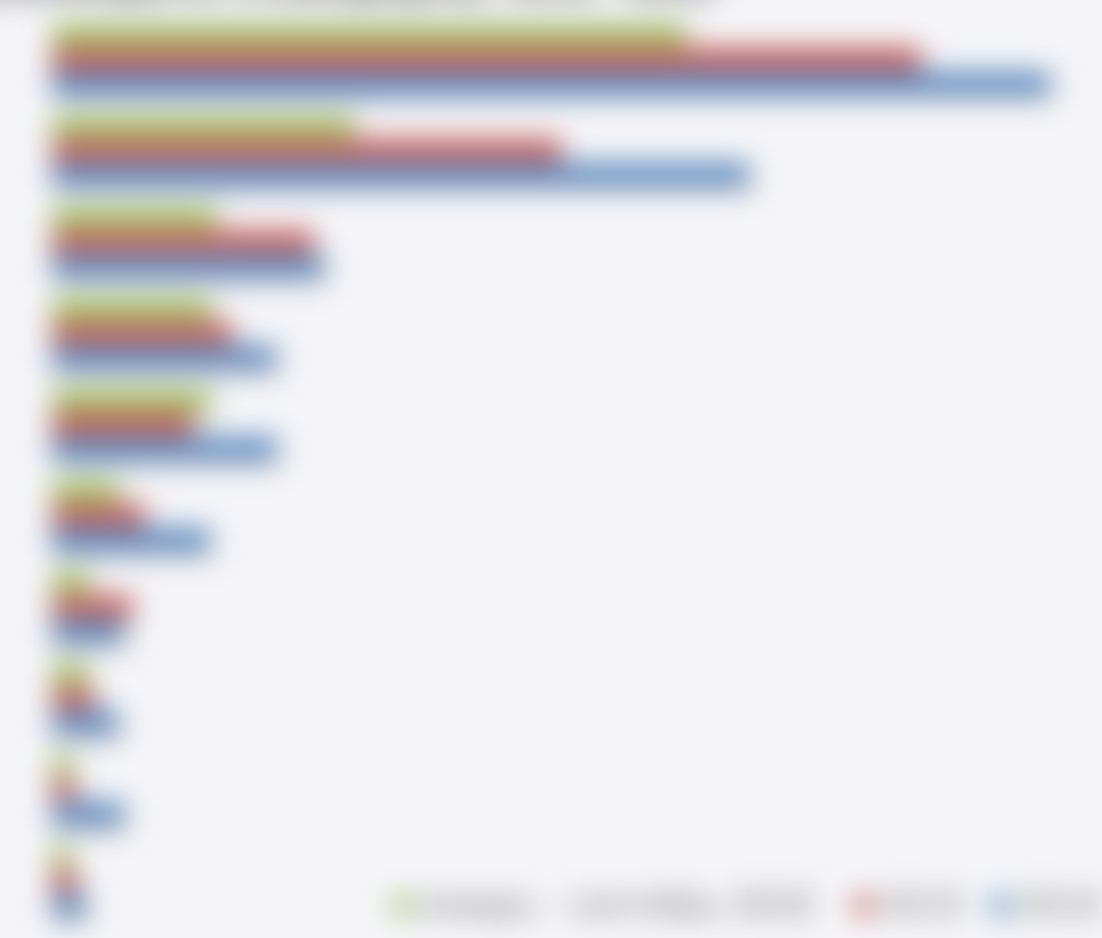
Forecast of supercomputer usage from 2010 to 2015. The chart shows a steady increase in usage over the period, with a significant jump in 2015.



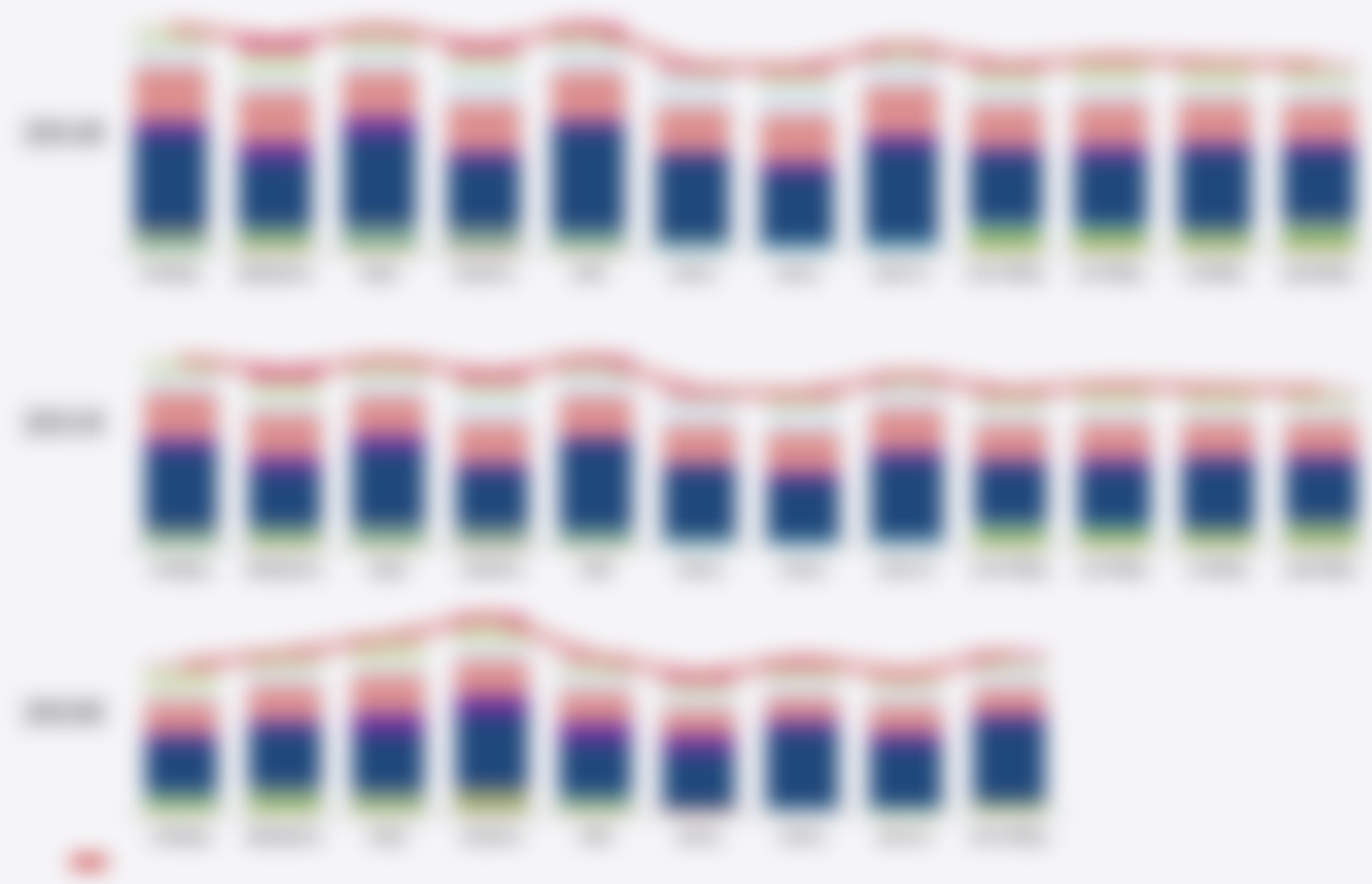
# Country Comparison: Average Income

Bar chart comparing average income across various countries. The Y-axis lists countries, and the X-axis shows income levels. Data is categorized into four groups: Group 1 (Green), Group 2 (Red), Group 3 (Blue), and Group 4 (Yellow).

Average Income by Country and Group



## Business opportunities management using Market 4 strategy



# Developmental stages of language acquisition

Language acquisition is a process that begins at birth and continues through childhood.

Developmental stages of language acquisition (0-5 years)



Developmental stages of language acquisition (5-10 years)



Legend: Vocabulary (Green), Grammar (Red), Pronunciation (Blue), Comprehension (Yellow)



**SDA**

**Step 1: Review**

**1**



# Supercomputer Usage Summary

Summary of supercomputer usage for the period of 2023-01-01 to 2023-01-31. The data is presented in three main sections: a detailed usage table, a summary table, and a radar chart.



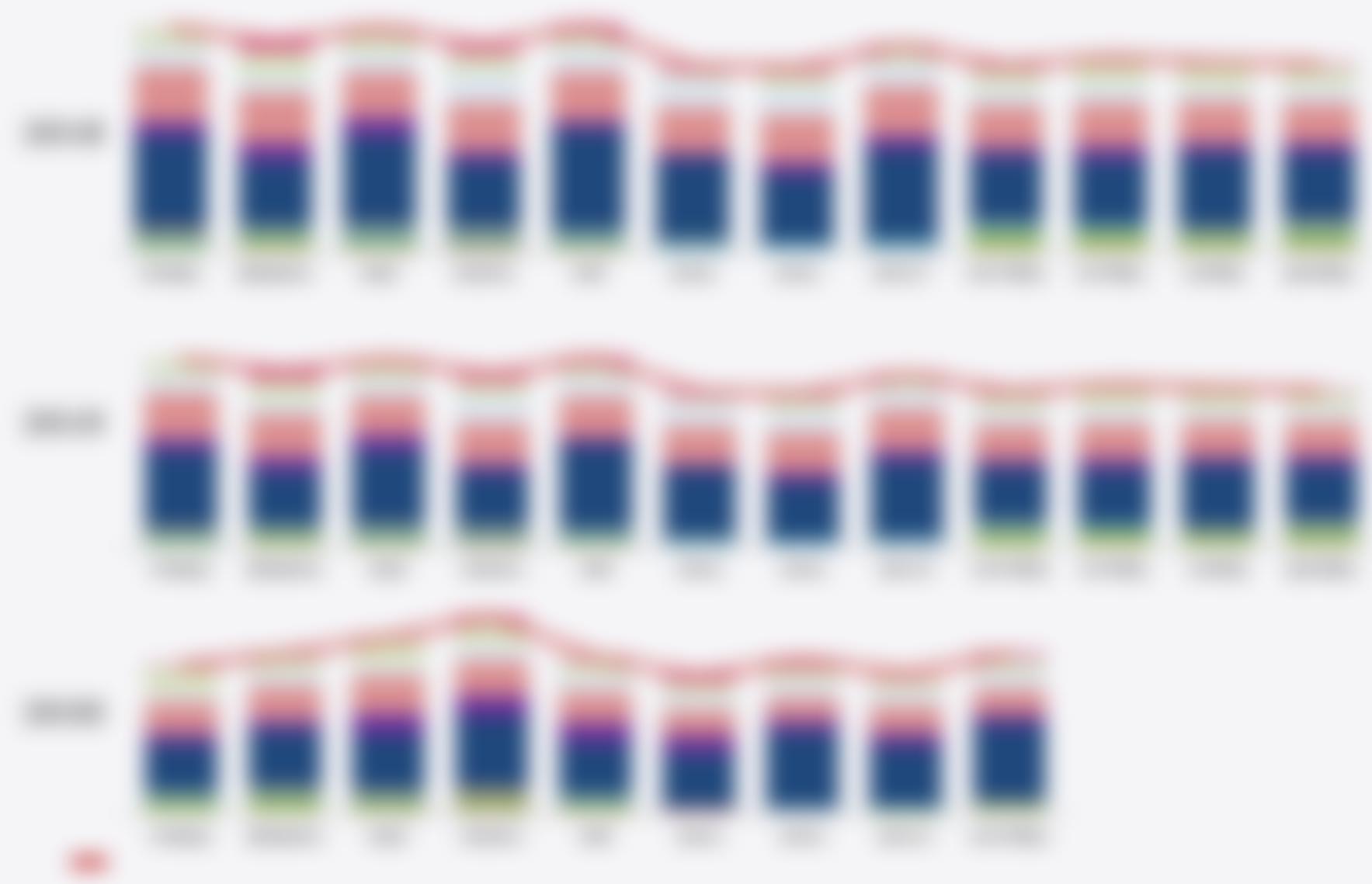
# Country Comparison: Average Income

Bar chart comparing average income across various countries. The Y-axis lists countries, and the X-axis represents average income in USD. The chart uses four colors: green, red, blue, and yellow.

Average Income by Country (USD)



### Business opportunities managers might consider in Mexico



# Investment opportunities in the market

Investment opportunities in the market





**SDA**

**Step 1: Review**

**1**

### Supercomputer usage statistics

The following table shows the usage statistics for the supercomputer system. The data is presented in a table format with columns for the year, the number of users, and the total number of hours used. The data is sorted by the number of users in descending order.

Year	Number of users	Total number of hours used
2010	10	10000
2011	10	10000
2012	10	10000



# Country Comparison: Average Income

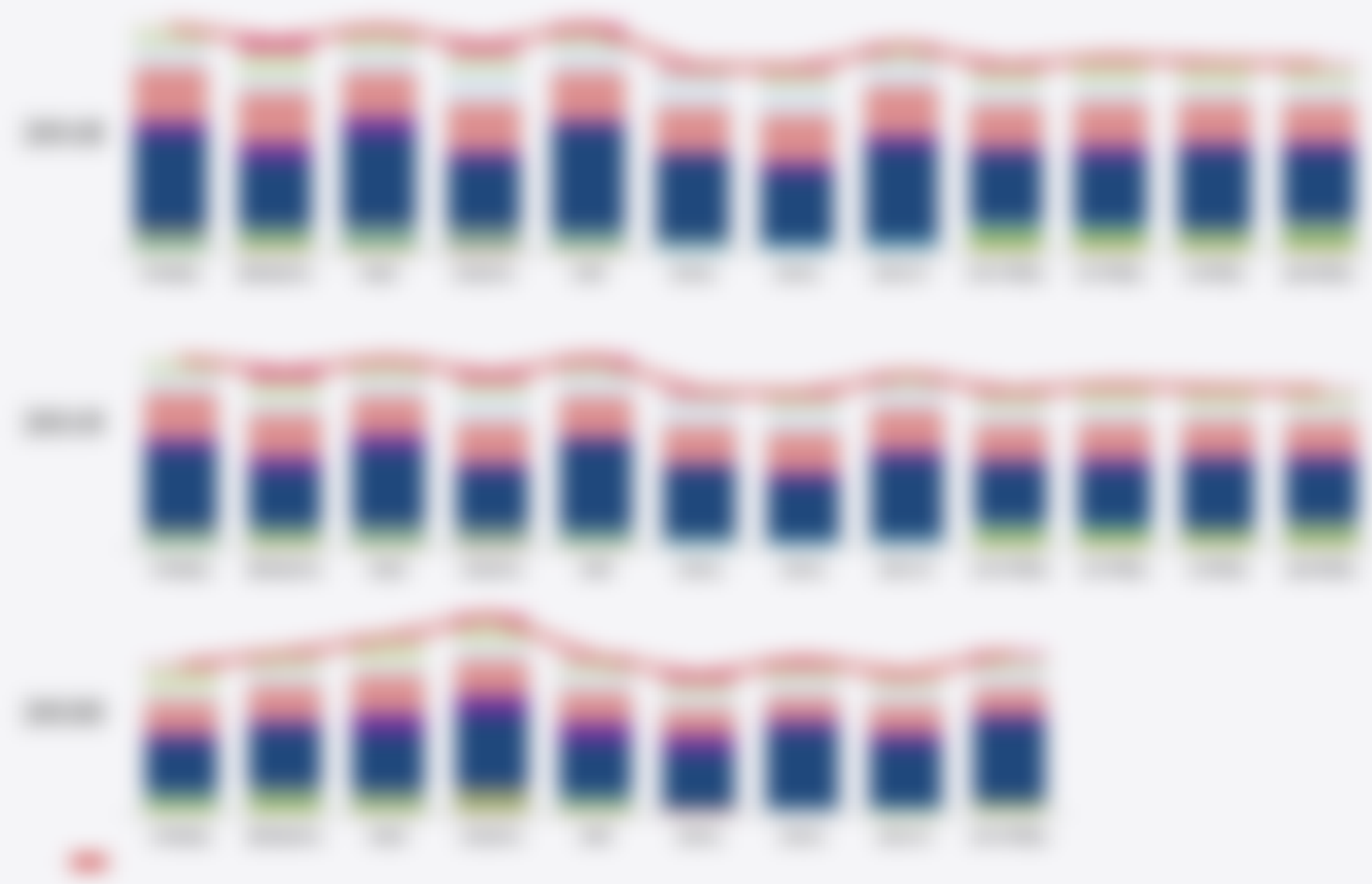
Bar chart comparing average income across various countries. The Y-axis represents the country name, and the X-axis represents the average income in USD. The chart uses four colors to represent different data series: Green, Red, Blue, and Yellow.

Average Income by Country (USD)





### Business cycle indicators: composite index: quarterly: seasonally adjusted



# Environmental Impact Assessment Report

Project Name: [Project Name]

Figure 1: Environmental Impact Assessment Results





**SDA**

**Step One**

**1**

# Supercomputer usage trends

Over the last few years, supercomputing has become a key technology for many industries, including healthcare, finance, and manufacturing. The demand for supercomputing power is growing rapidly, and this is driving the development of new supercomputing architectures and technologies. In this report, we will explore the current state of supercomputing and the trends that are shaping its future.



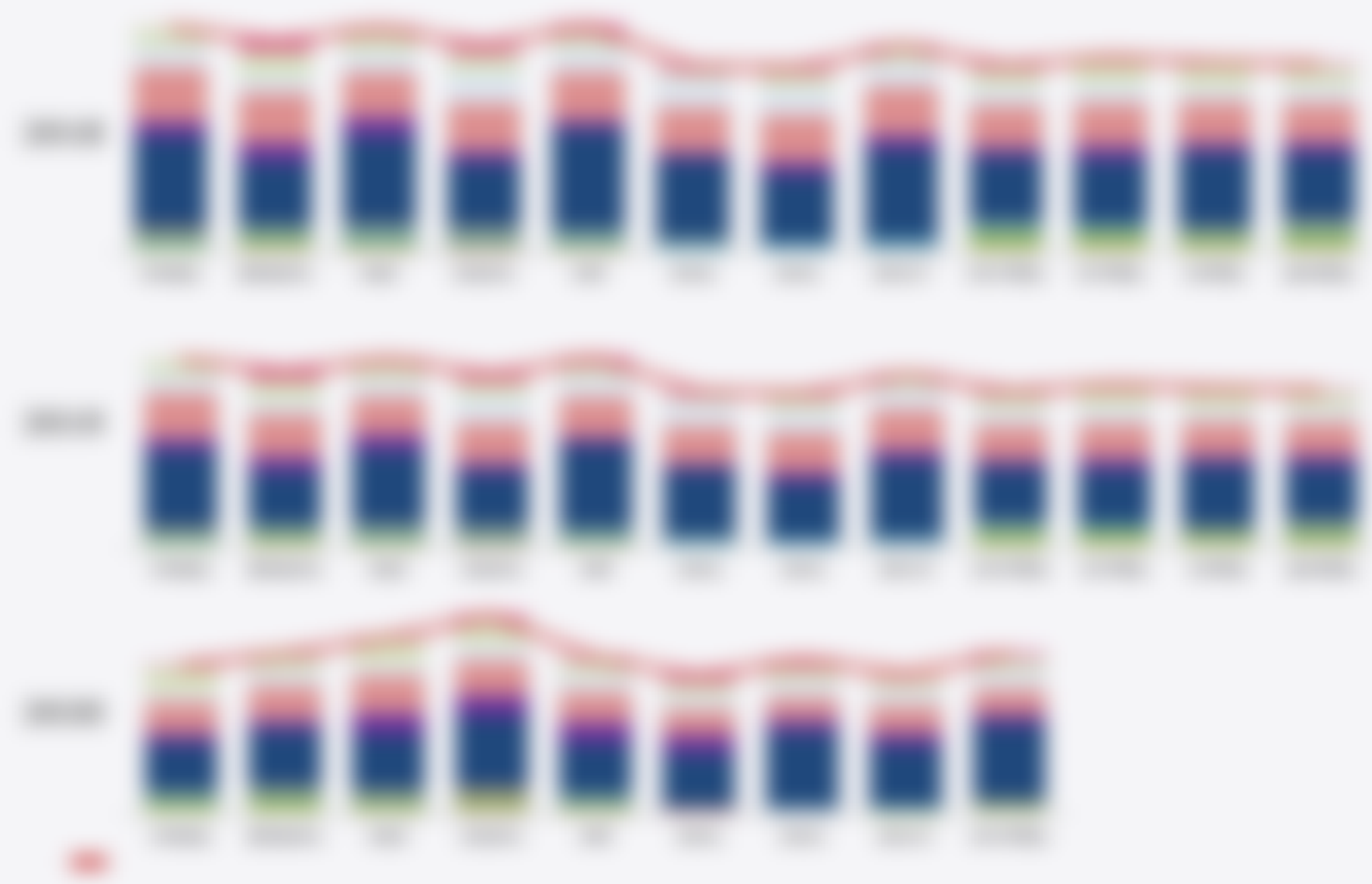
# Country Comparison: Average Income

Bar chart comparing average income across various countries. The Y-axis represents the country name, and the X-axis represents the average income in USD. The chart uses four distinct colors to represent different data series: green, red, blue, and yellow.

Average Income by Country (USD)



Business cycle indicators: composite index (1990-2010)



# Environmental Impact Assessment Report

Project Name: [Project Name]



**Summary of Environmental Impact Assessment Results**

Category	Baseline (Green)	Proposed (Red)	Mitigated (Blue)
Water Quality	85	95	90
Air Quality	70	80	75
Soil Quality	60	70	65
Noise & Vibration	50	60	55
Ecology	40	50	45
Land Use	30	40	35
Visual Amenity	20	30	25
Climate Change	10	20	15

Legend: Baseline (Green), Proposed (Red), Mitigated (Blue)



# Business operations map: hours in various types of meetings



**SDA**

**Step One**

**1**

# Supercomputer usage trends

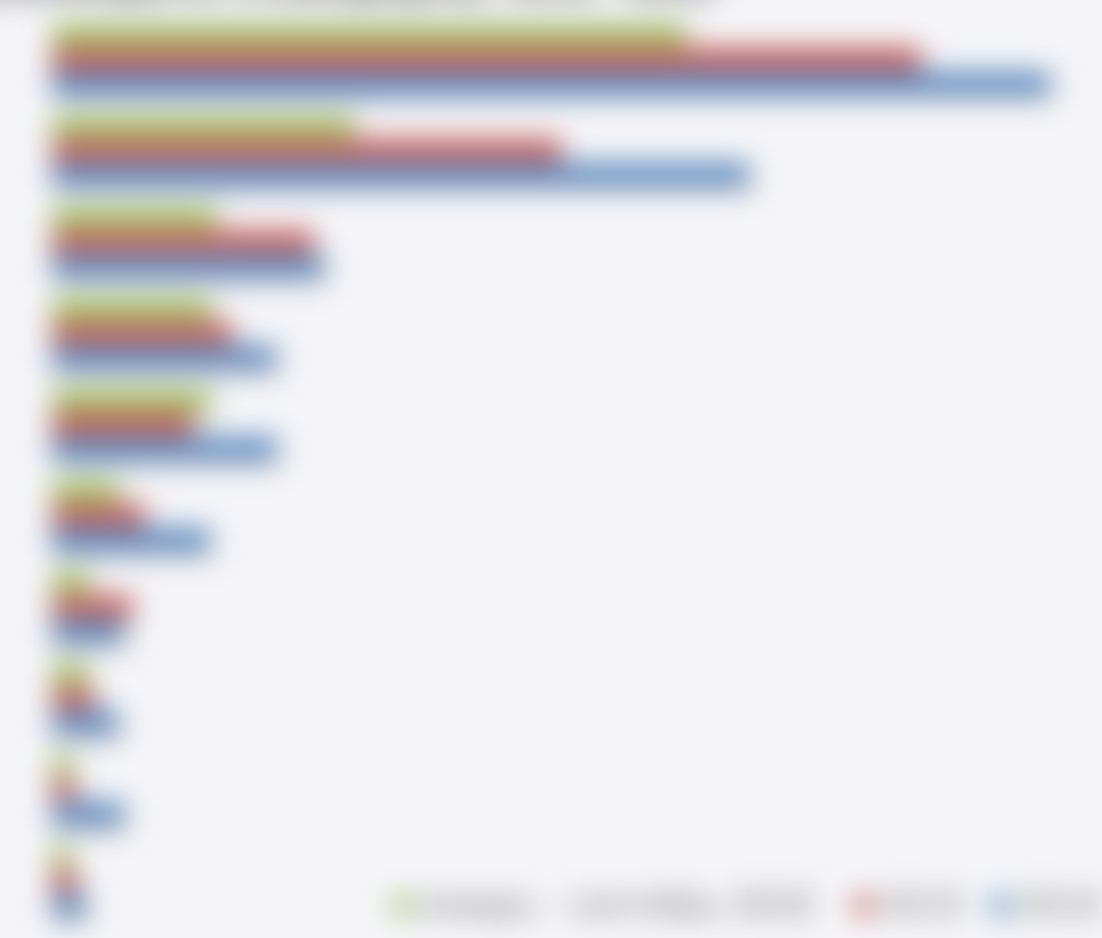
Over the last few years, supercomputing has become a key technology for many industries, including healthcare, finance, and manufacturing. The demand for supercomputing power is growing rapidly, and this is driving the development of new supercomputing architectures and technologies. In this report, we will explore the current state of supercomputing and the trends that are shaping its future.



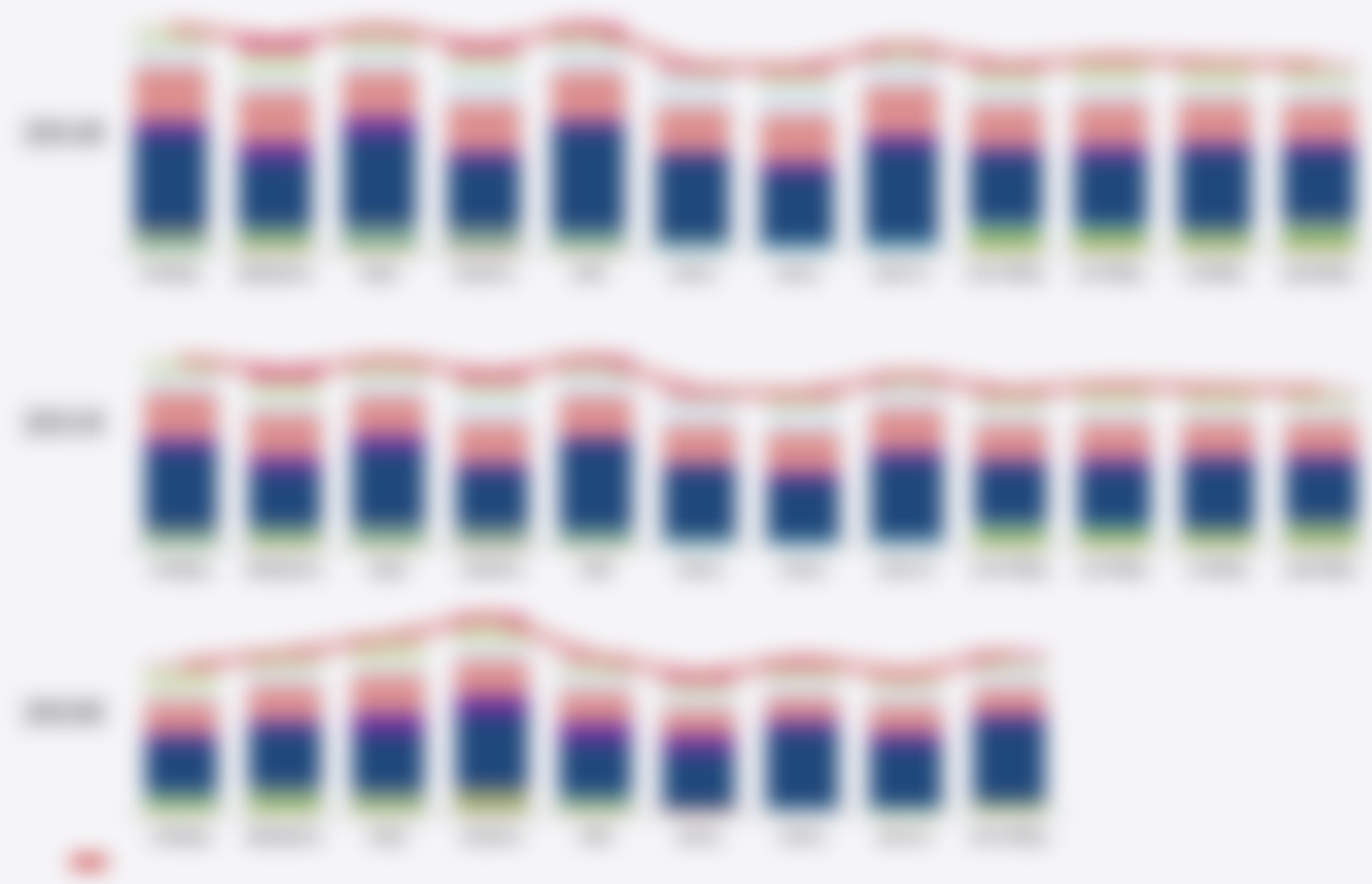
# Country Comparison: Average Income

Bar chart comparing average income across various countries. The Y-axis represents the country name, and the X-axis represents the average income in USD. The chart uses four colors to represent different data series: Green, Red, Blue, and Yellow.

Average Income by Country (USD)



**Business opportunities managers may face in 2014**



# Environmental Impact Assessment Report

Project Name: [Project Name]



# Business operations map: hours in various types of meetings



**SDA**

**Step Response with Exponential**

—



# Supercomputer usage Performance Comparison

... ..



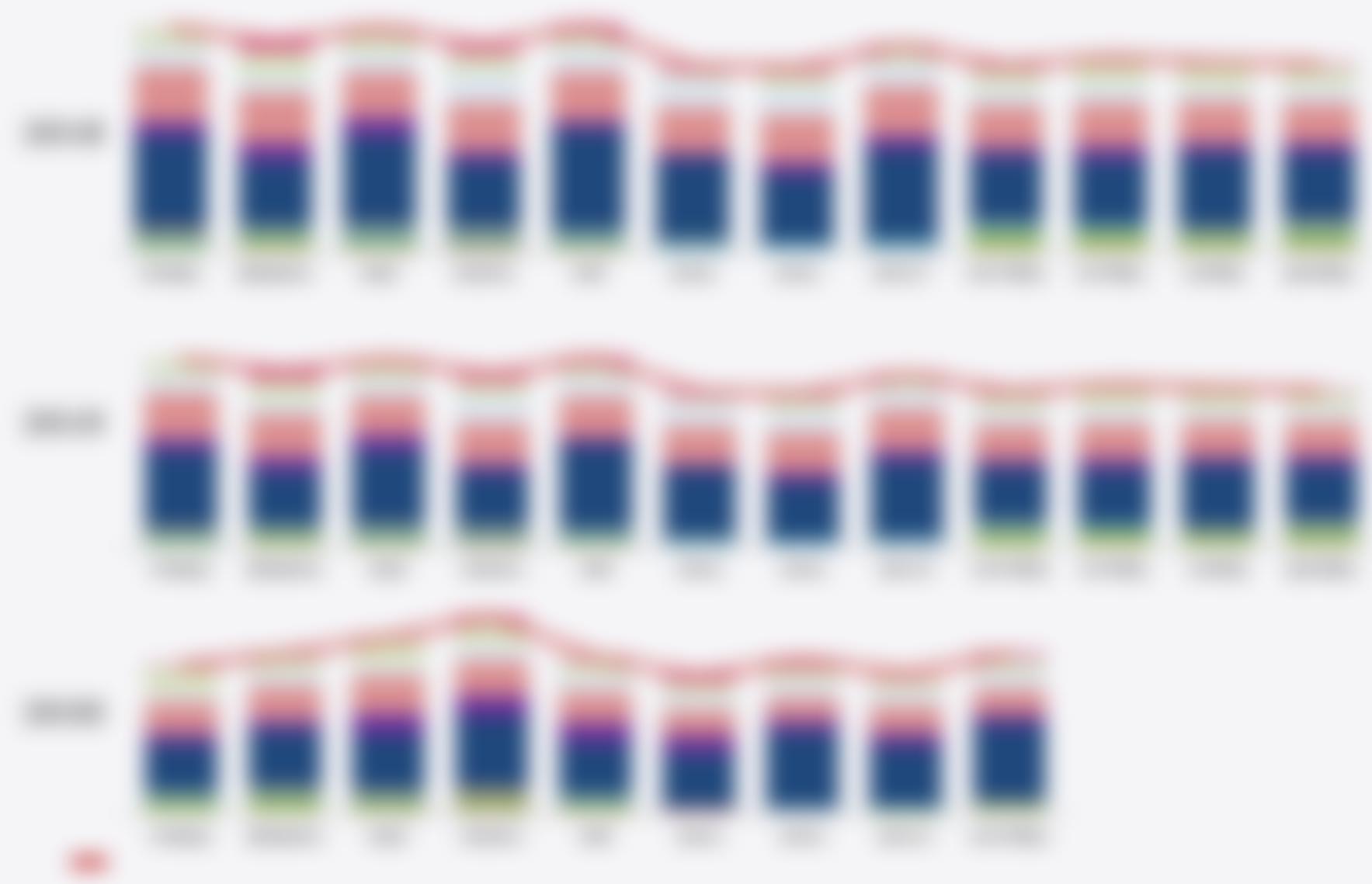
# Центральные тенденции в развитии экономики

Вопросы, связанные с анализом и оценкой состояния экономики, являются одними из наиболее актуальных в настоящее время.

Динамика показателей развития экономики



## Business cycle indicators: composite index (1990-2010)



# Investment opportunities in the market

Investment opportunities in the market



### Business expenditure types by country and year



**SDA**

**Step 1**

**1**

# Supercomputer usage trends

Over the last few years, supercomputing has become a key technology for many industries, including healthcare, finance, and manufacturing. The growth of supercomputing is driven by the increasing demand for high-performance computing (HPC) capabilities, which are essential for solving complex problems and accelerating research and development. This report provides an overview of the current state of supercomputing and the trends shaping its future.



## Центральная тенденция и дисперсия

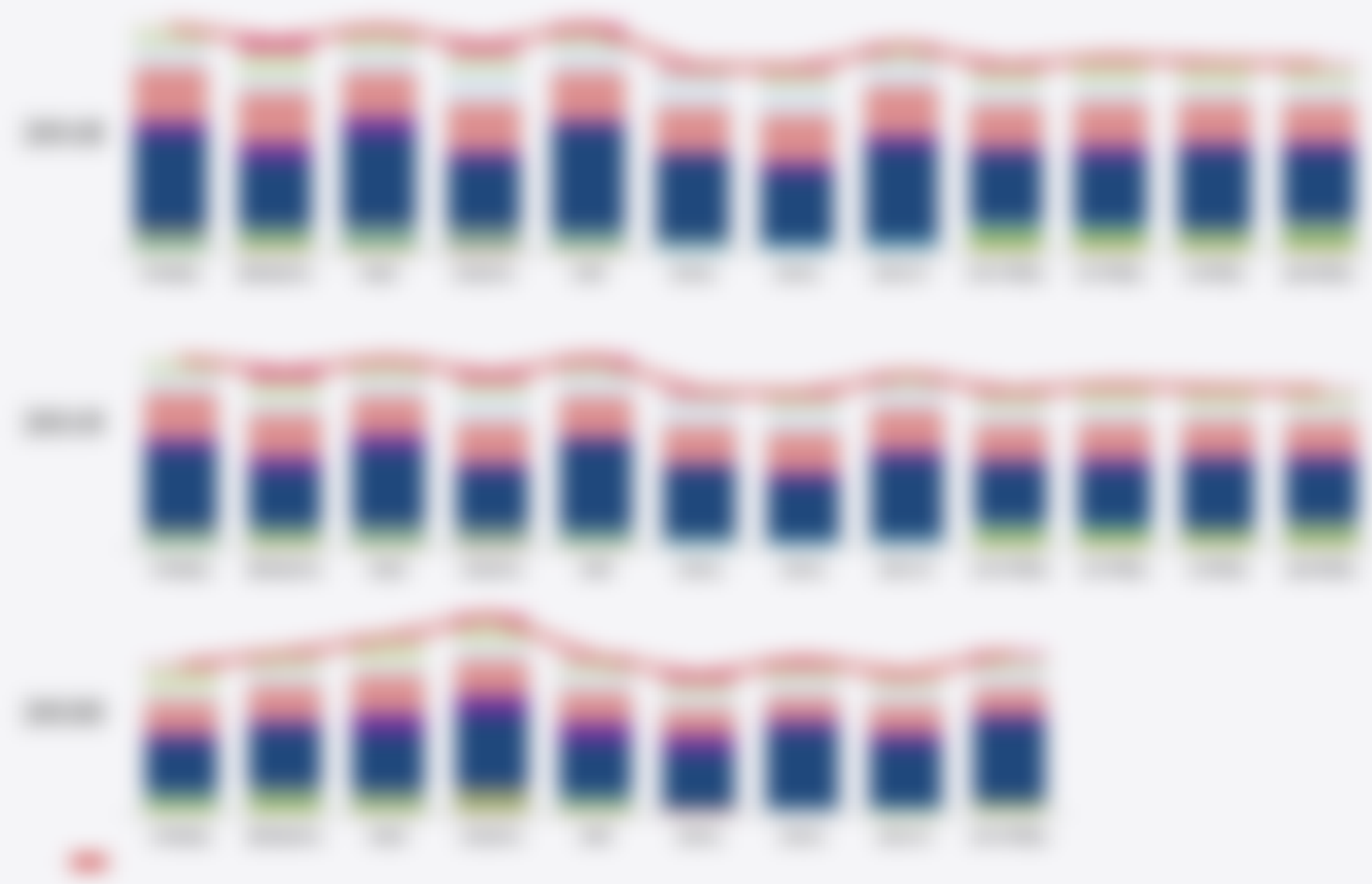
Вектор параметров  $\theta$  оценивается по выборке  $X = (X_1, \dots, X_n)$  с помощью метода максимального правдоподобия (ММП).

Метод максимального правдоподобия (ММП)





### Business cycle indicators: composite index



# Investment opportunities across regions

Investment opportunities across regions



### Business expenditures upon Russia in various systems in 2008



**SDA**

**Step 1: Customer Focus**

10

Supercomputer usage Comparison - 2016

100%  
 90%  
 80%  
 70%  
 60%  
 50%  
 40%  
 30%  
 20%  
 10%  
 0%



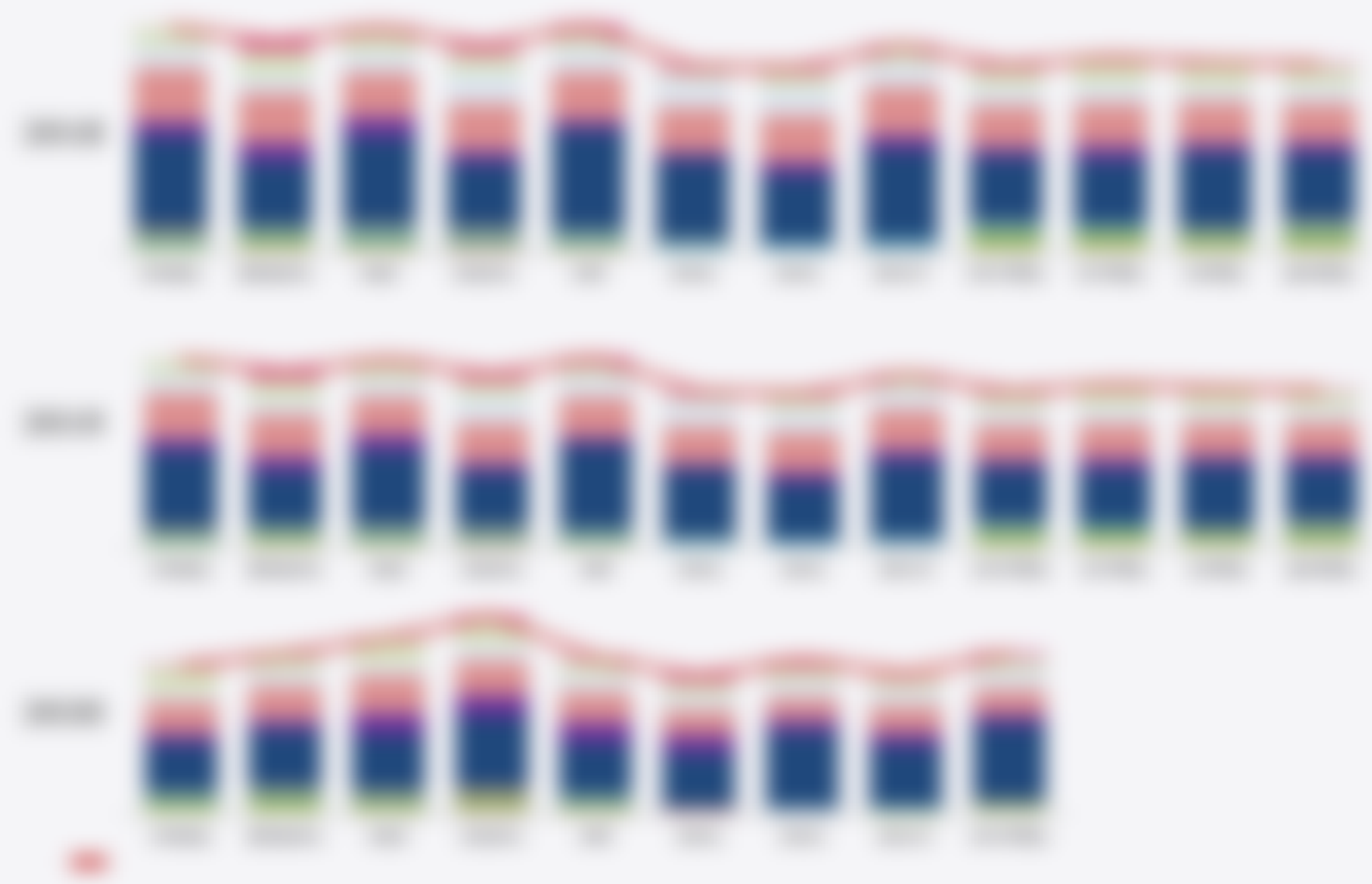
# Country Comparison: Average Income

Bar chart comparing average income across various countries. The Y-axis represents the country name, and the X-axis represents the average income in USD. The chart uses four colors to represent different data series: Green, Red, Blue, and Yellow.

Average Income by Country (USD)



## Business cycle indicators: composite index



# Developmental stages of language acquisition

Figure 1.1: Developmental stages of language acquisition





# Business operations report: Customer Feedback on new product launch



# SDA

Step 1: **Review**

1

### Supercomputer usage trends

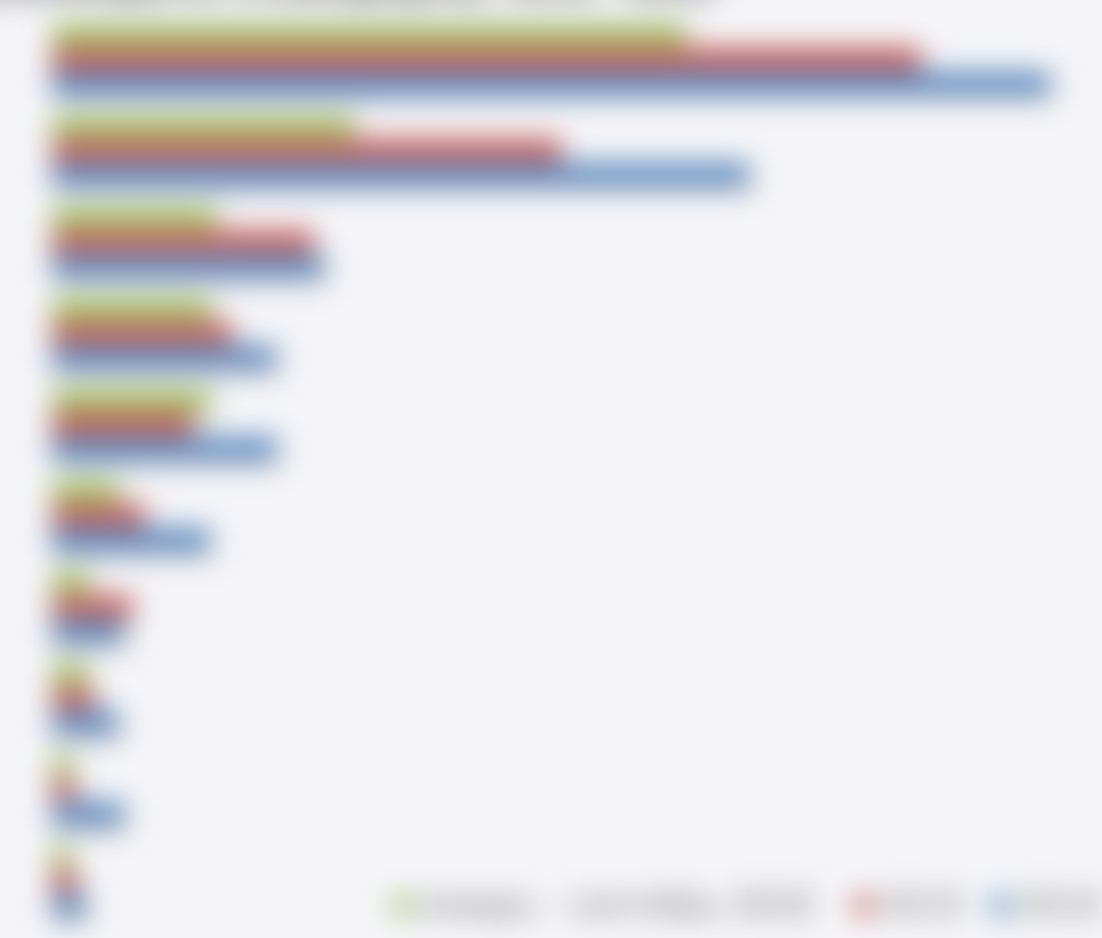
... ..



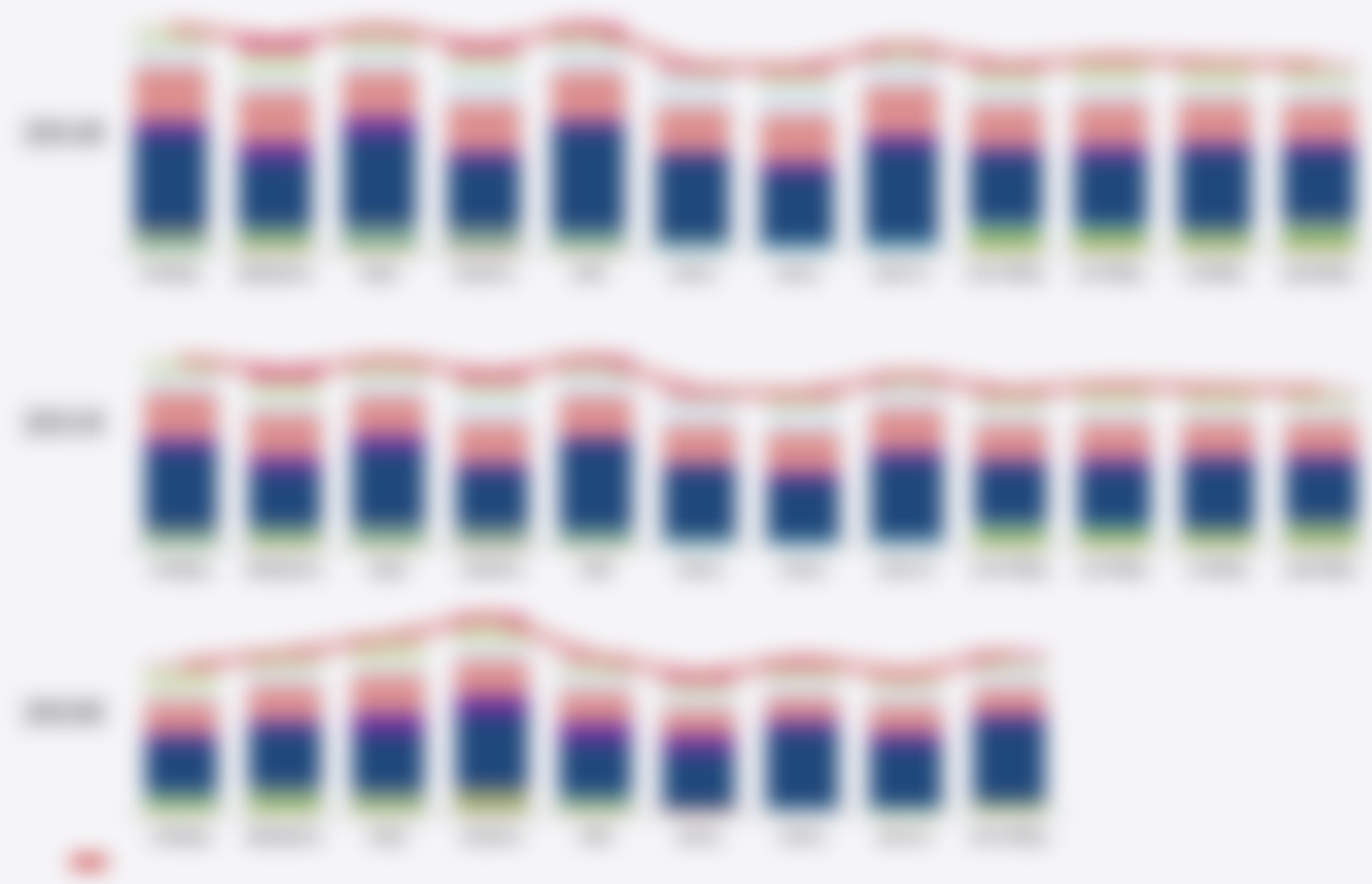
# Population Change in the United States

From 1990 to 2000, the population of the United States increased by 13.5 million people, or 4.5 percent.

Population Change in the United States, 1990-2000

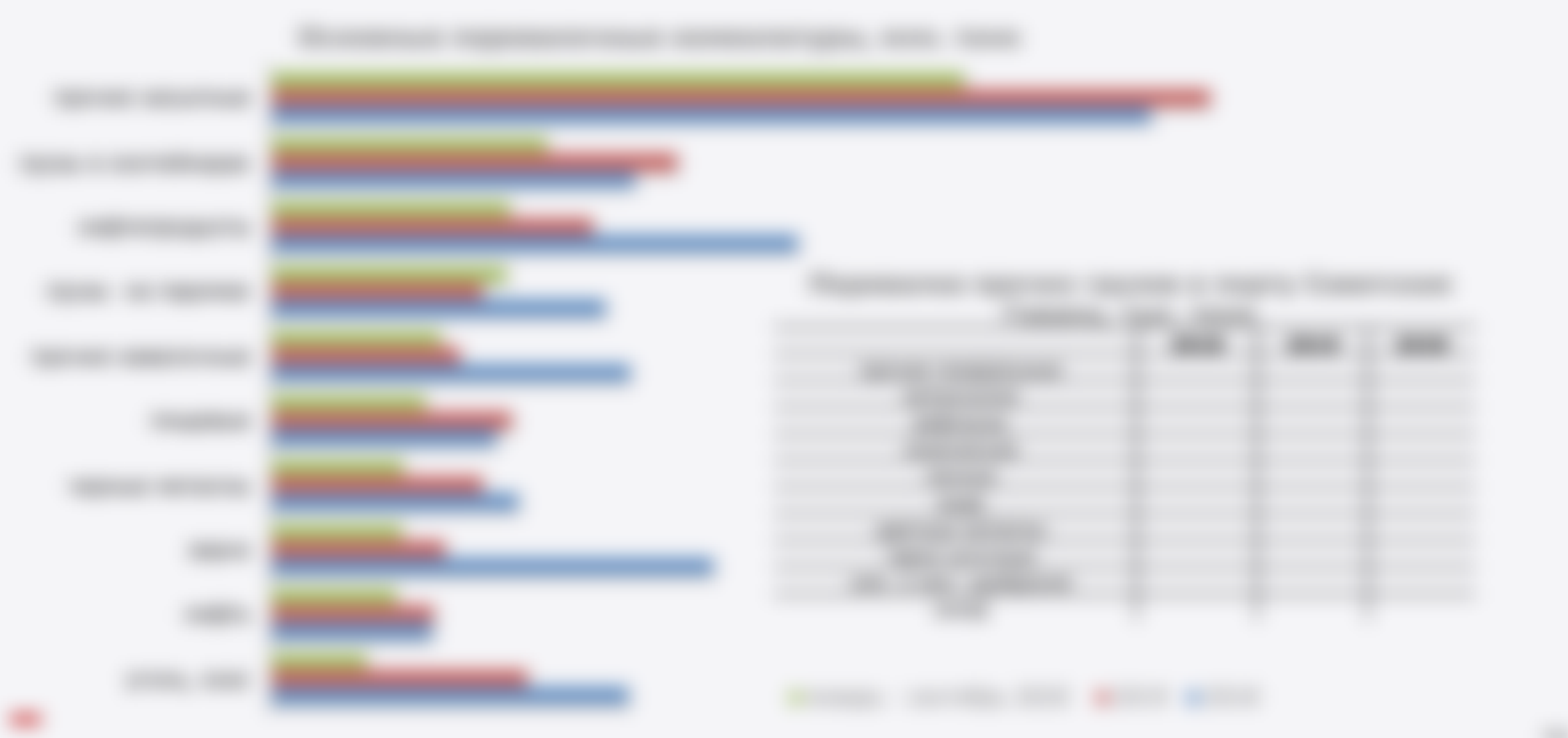


**Business cycle indicators: composite index**



# Environmental Impact Assessment Report

Project Name: [Project Name]



## Business opportunities map: from the current system to success



**SDA**

**Step Manager**

**1**



# Supercomputer Top 500 Storage

2010 2011 2012 2013 2014 2015 2016 2017 2018 2019 2020 2021 2022 2023 2024



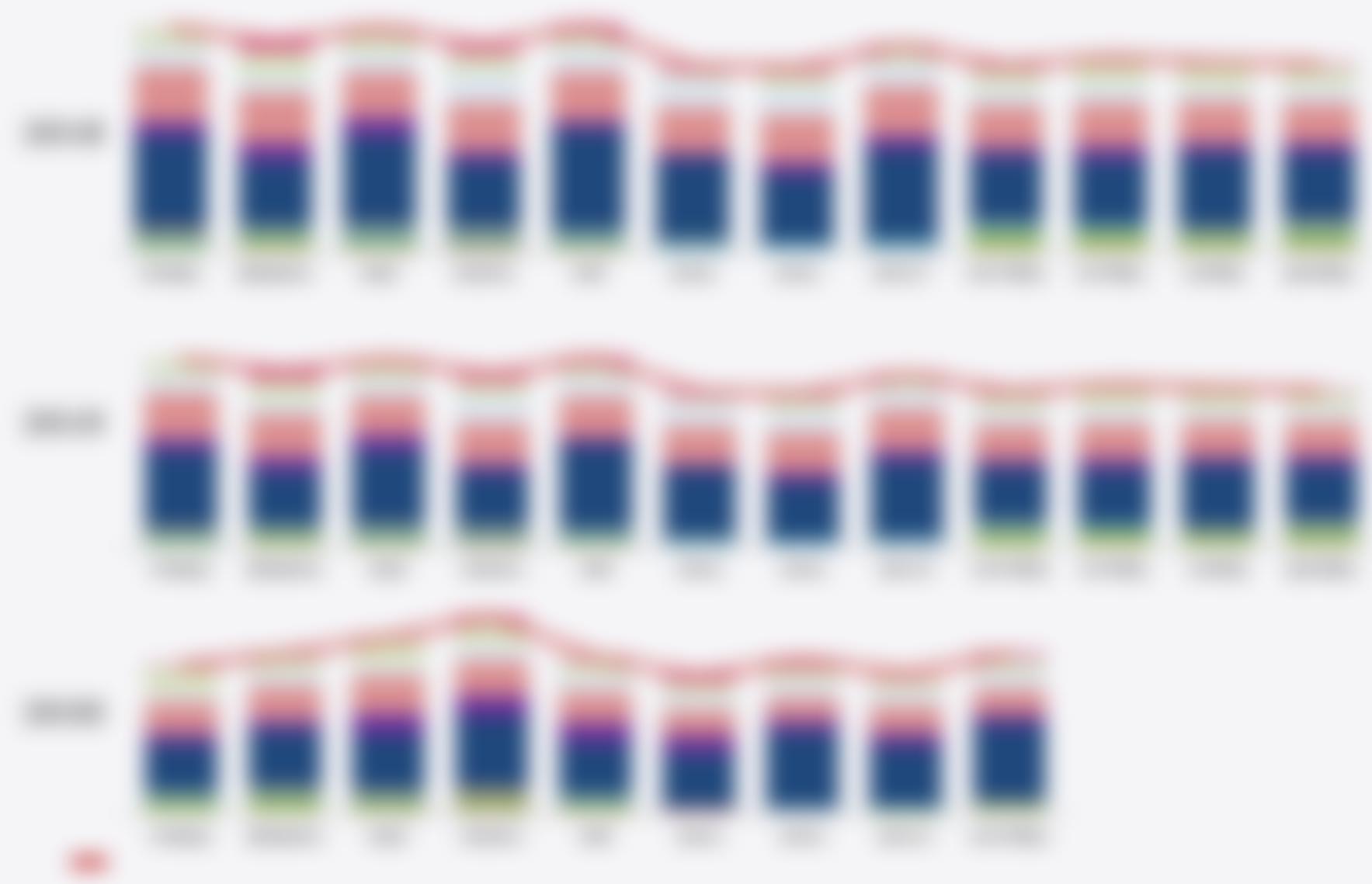
# Country's average life expectancy

Line graph showing the average life expectancy in years for the top 10 countries from 2000 to 2020.

Line graph showing the average life expectancy in years for the top 10 countries from 2000 to 2020.

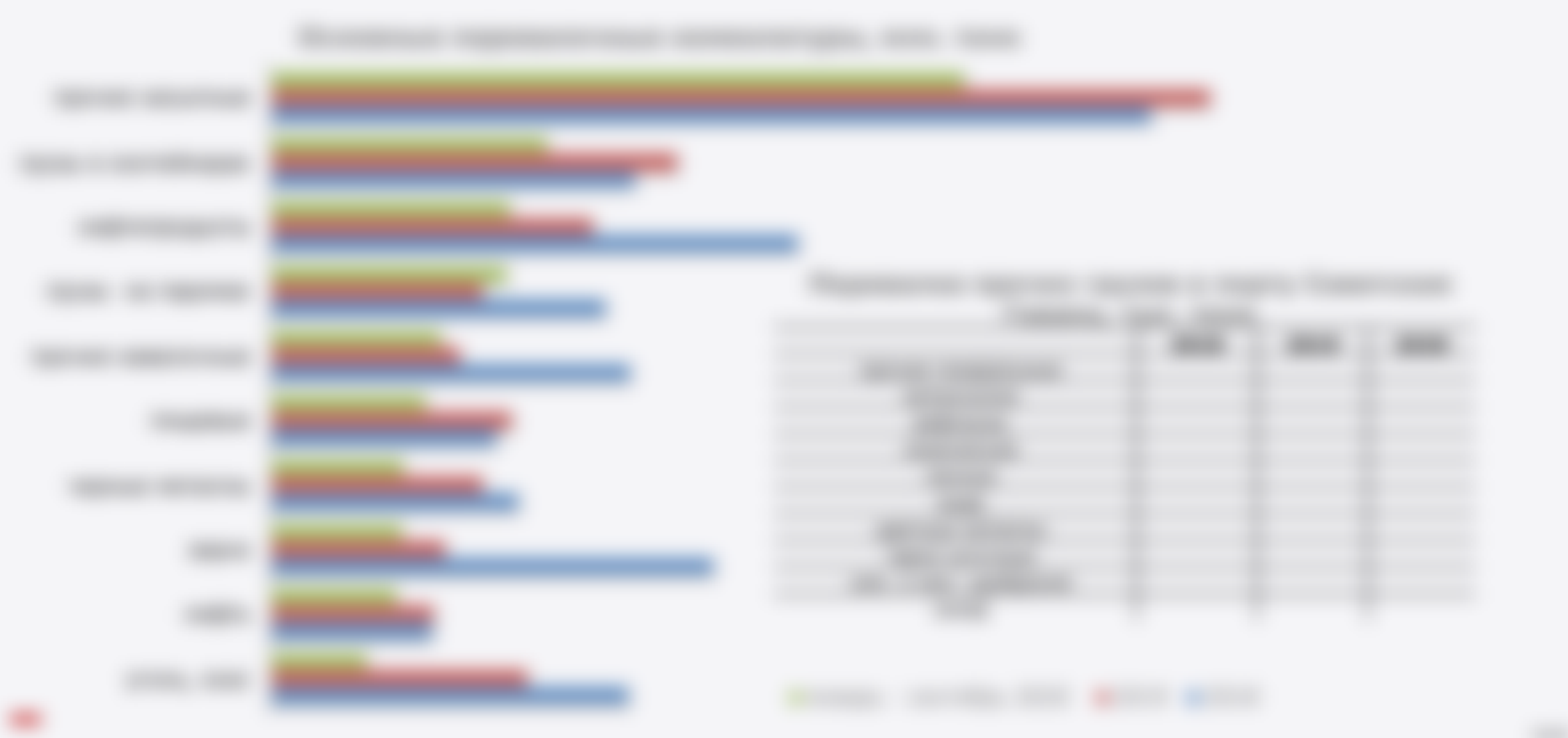


### Business cycle indicators: composite index (2000=100)



# Environmental Impact Assessment Report

Project Name: [Project Name]



Business operations report: Strategic vs. tactical issues in business



**SDA**

**Step 1: Supply**

**1**

# Supercomputer supply pipeline

... ..



# Հայաստանի տնտեսության ներքին կապիտալը

Հազար միլիարդ ՀՀ դր

Տնտեսական ցուցանիշներ, 2000-2020



■ Ընդամենը (Հազար միլ. ՀՀ դր)
 ■ Մնացորդ կապիտալ (Հազար միլ. ՀՀ դր)
 ■ Շրջանառվող կապիտալ (Հազար միլ. ՀՀ դր)



Business operations: major suppliers in terms of spend in millions



**SDA**

**Step 1: Mission**

**1**

### Supercomputer usage Resources

1. **Usage**  
 2. **Resources**  
 3. **Usage**  
 4. **Resources**  
 5. **Usage**  
 6. **Resources**  
 7. **Usage**  
 8. **Resources**  
 9. **Usage**  
 10. **Resources**  
 11. **Usage**  
 12. **Resources**  
 13. **Usage**  
 14. **Resources**  
 15. **Usage**  
 16. **Resources**  
 17. **Usage**  
 18. **Resources**  
 19. **Usage**  
 20. **Resources**  
 21. **Usage**  
 22. **Resources**  
 23. **Usage**  
 24. **Resources**  
 25. **Usage**  
 26. **Resources**  
 27. **Usage**  
 28. **Resources**  
 29. **Usage**  
 30. **Resources**  
 31. **Usage**  
 32. **Resources**  
 33. **Usage**  
 34. **Resources**  
 35. **Usage**  
 36. **Resources**  
 37. **Usage**  
 38. **Resources**  
 39. **Usage**  
 40. **Resources**  
 41. **Usage**  
 42. **Resources**  
 43. **Usage**  
 44. **Resources**  
 45. **Usage**  
 46. **Resources**  
 47. **Usage**  
 48. **Resources**  
 49. **Usage**  
 50. **Resources**  
 51. **Usage**  
 52. **Resources**  
 53. **Usage**  
 54. **Resources**  
 55. **Usage**  
 56. **Resources**  
 57. **Usage**  
 58. **Resources**  
 59. **Usage**  
 60. **Resources**  
 61. **Usage**  
 62. **Resources**  
 63. **Usage**  
 64. **Resources**  
 65. **Usage**  
 66. **Resources**  
 67. **Usage**  
 68. **Resources**  
 69. **Usage**  
 70. **Resources**  
 71. **Usage**  
 72. **Resources**  
 73. **Usage**  
 74. **Resources**  
 75. **Usage**  
 76. **Resources**  
 77. **Usage**  
 78. **Resources**  
 79. **Usage**  
 80. **Resources**  
 81. **Usage**  
 82. **Resources**  
 83. **Usage**  
 84. **Resources**  
 85. **Usage**  
 86. **Resources**  
 87. **Usage**  
 88. **Resources**  
 89. **Usage**  
 90. **Resources**  
 91. **Usage**  
 92. **Resources**  
 93. **Usage**  
 94. **Resources**  
 95. **Usage**  
 96. **Resources**  
 97. **Usage**  
 98. **Resources**  
 99. **Usage**  
 100. **Resources**



# Հայաստանի արտադրության նյութի շուկաներ

Հաշվարկված արտադրություն

Հարկային արտադրություն, մլն ՀՀԴ



ՀԱՅԱՍՏԱՆԻ ԱՐՏԱԴՐՈՒՄԻ ՆՅՈՒՑԻ ՇՈՒԿԱՆԵՐ

Business operations report: Revenue by region (2018-2022)



**SDA**

**Step 1: Measurement on Assets**

—

# Supercomputer sagt: Menschheit ist fertig

Die Welt ist überbevölkert, die Ressourcen sind erschöpft, die Umwelt ist zerstört. Ein Supercomputer hat berechnet, dass die Menschheit nicht überleben kann. Die Welt ist überbevölkert, die Ressourcen sind erschöpft, die Umwelt ist zerstört. Ein Supercomputer hat berechnet, dass die Menschheit nicht überleben kann.



# Цыфры чыстай вады ў Беларусі

2010-2020

Чысты вады, літ/дзень



2010 2011 2012 2013 2014 2015 2016 2017 2018 2019 2020



# Business operations report: Performance on target in most areas



# SDA

Step 1: **Registration**

1

# Supercomputer usage by country

Supercomputers are used for a wide range of applications, from scientific research to business intelligence. The following chart shows the usage of supercomputers by country in 2018.



# Հայաստանի տնտեսական ցուցիչները

ՀՀ ԿՍՊ-ի տնտեսական ցուցիչները

Տնտեսական ցուցիչները, 2010-2020



ՀՀ ԿՍՊ-ի ընդհանուր ներքին արտադրանքը (2010=100) | ՀՀ ԿՍՊ-ի մեկ շնչի վրա (2010=100) | ՀՀ ԿՍՊ-ի մեկ շնչի վրա (2010=100)

**Business operations: major developments in 2022 (continued)**



SDA

Step 1

1

# Supercomputer usage trends

Source: [https://www.frost.com/research/industry-reports/industry-report-supercomputing-market-size-forecast-2023-2030](#)



# Цыфры развіцця індустрыяльнага сектара

У 2019 годзе

Індустрыя і будаўніцтва, мільярд руб.





**Revenue contribution by source in various regions in 2019**

